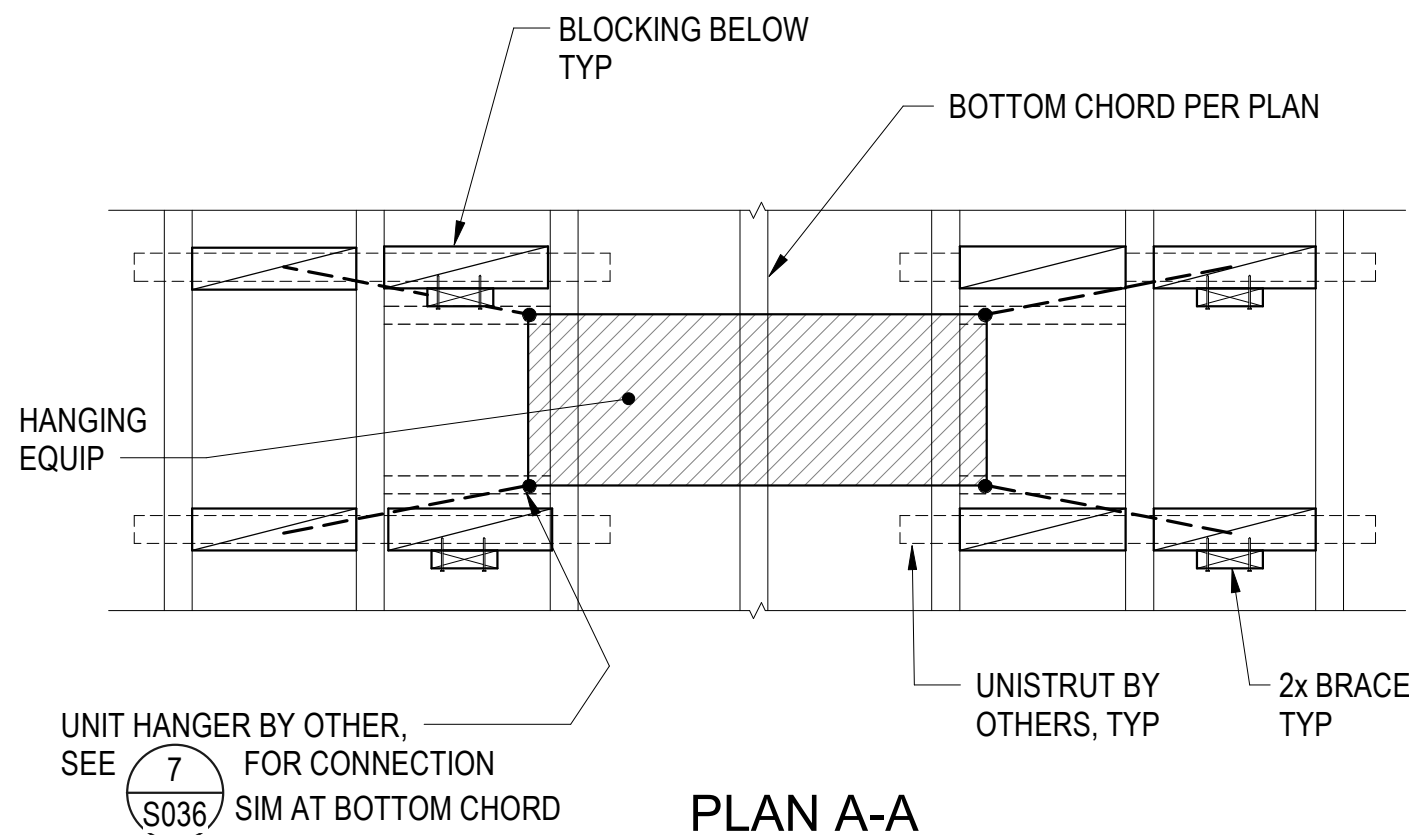
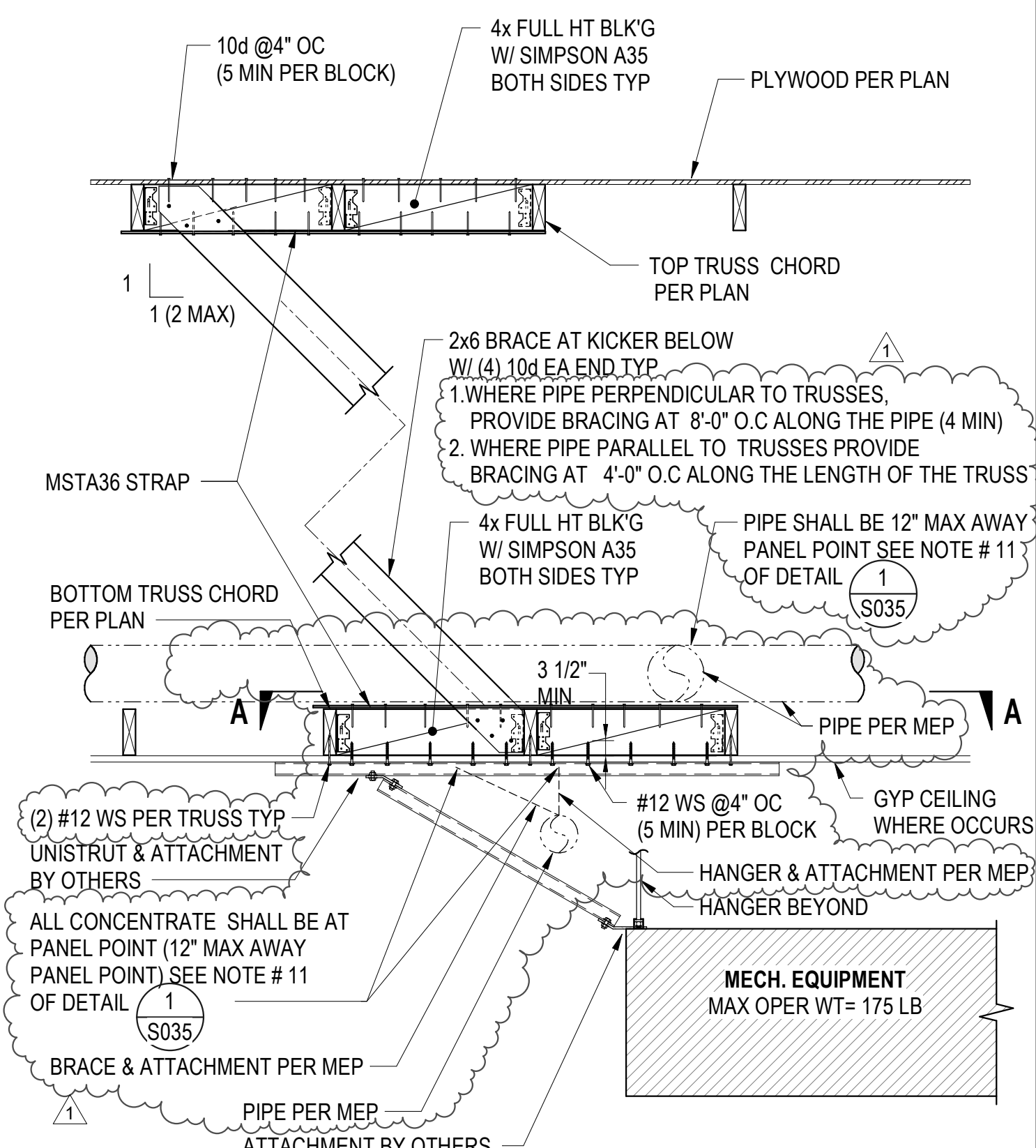


ALTERNATE ATTACHMENT OPTION



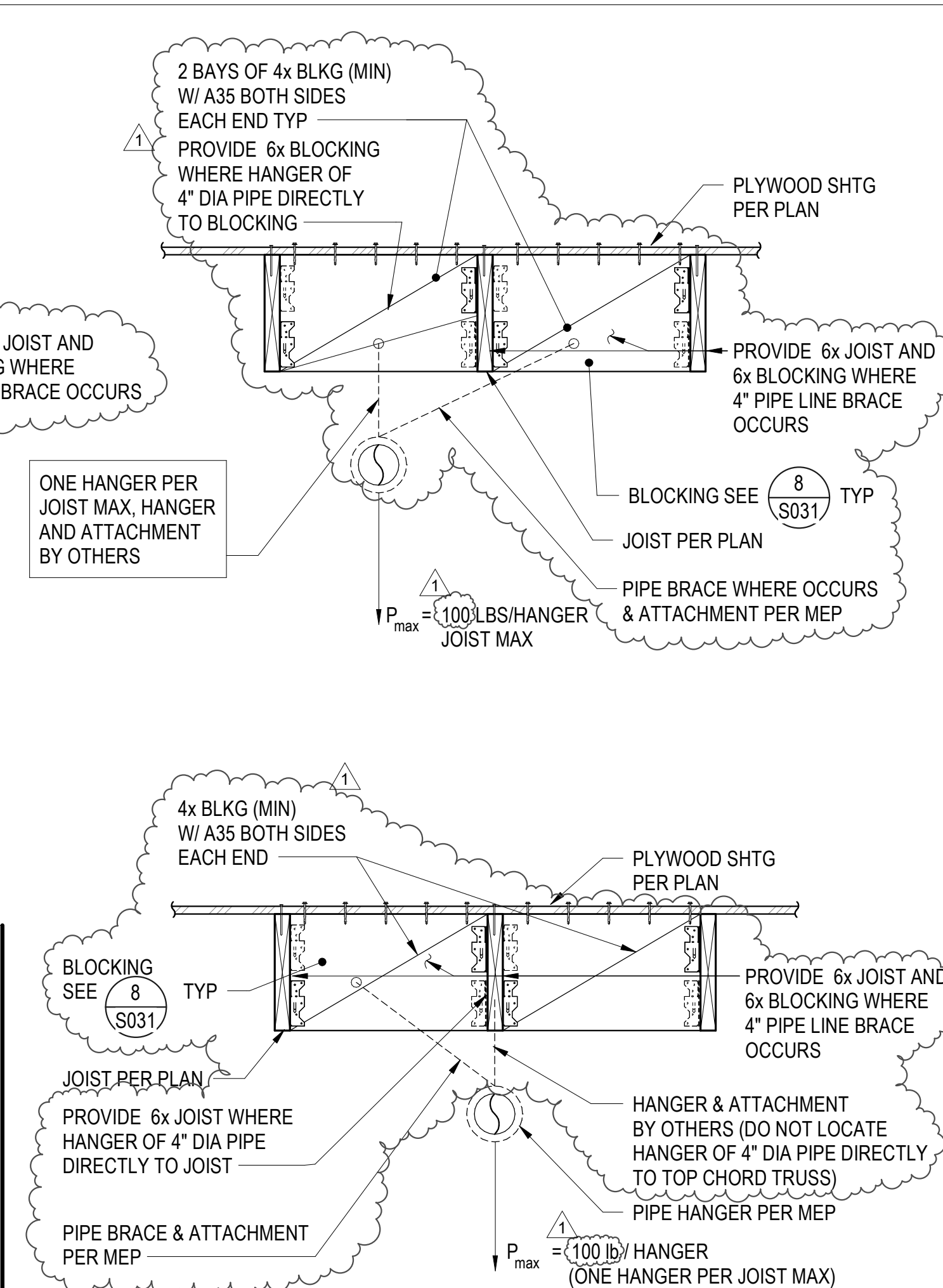
PLAN A-A



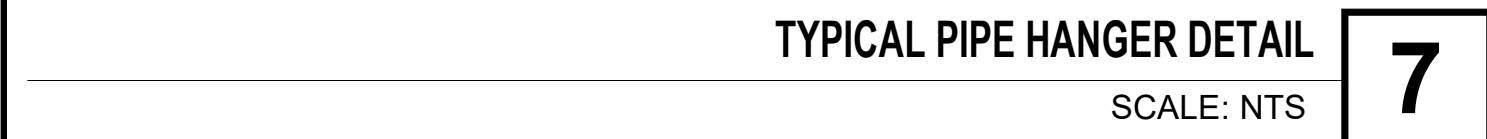
TYP HANGING PIPE OR MEP EQUIPMENT SUPPORT DETAIL AT TRUSSES

SCALE: NTS

8



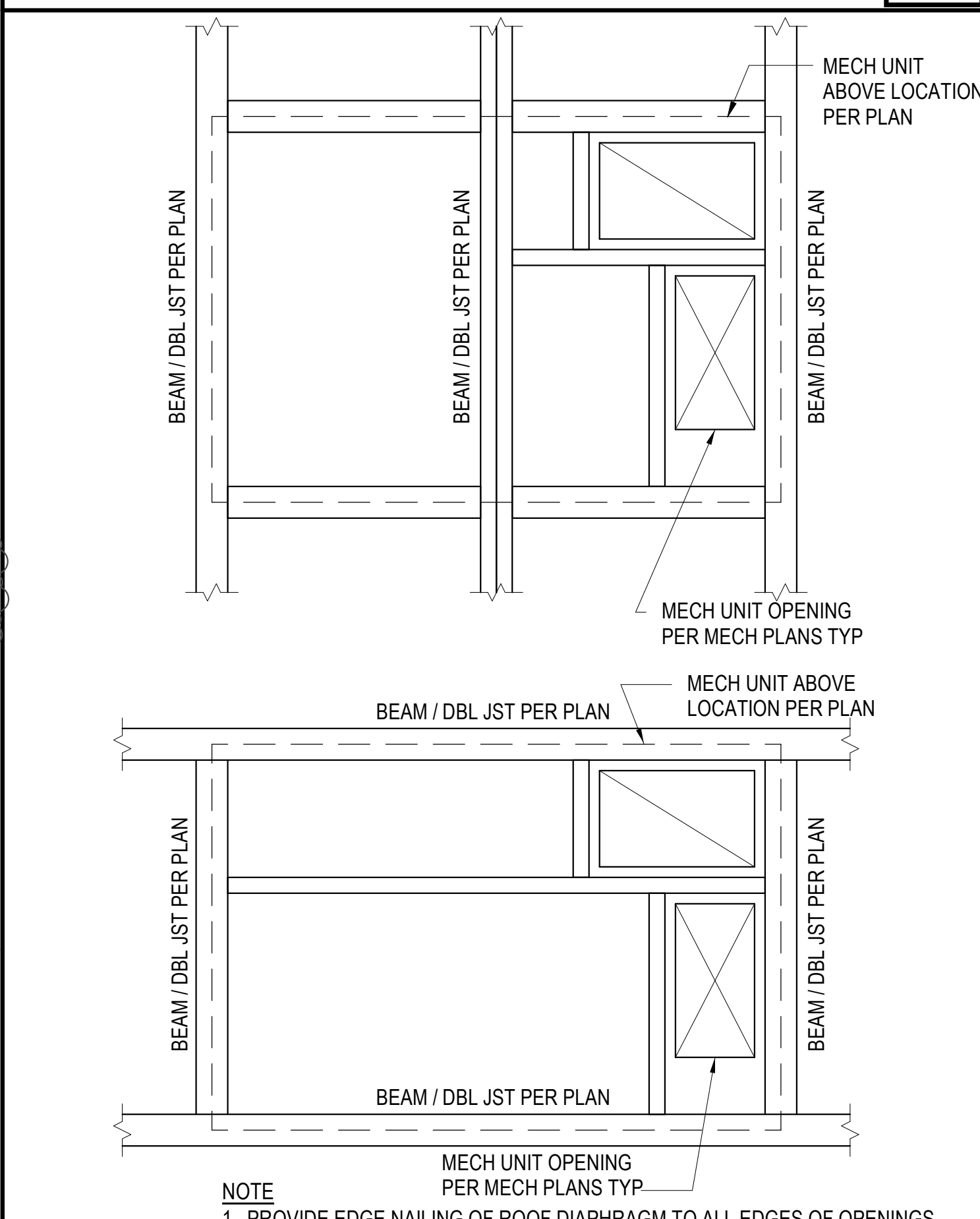
CONDITION AT SAWN LUMBER JOIST OR TOP CHORD TRUSS FRAMING



TYPICAL PIPE HANGER DETAIL

SCALE: NTS

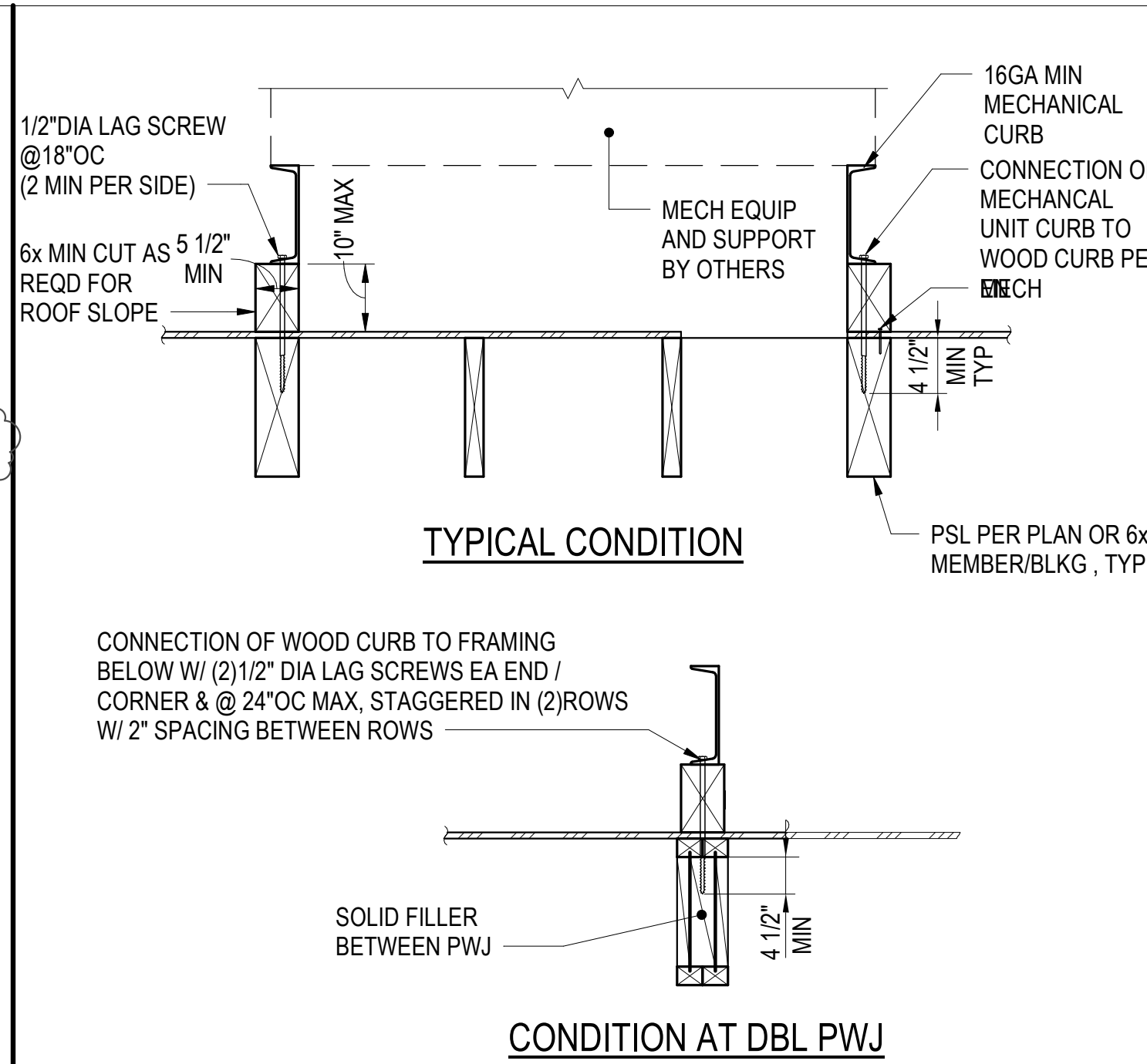
7



TYP ROOF FRAMING AT MECHANICAL UNIT AT OPEN ROOF

SCALE: NTS

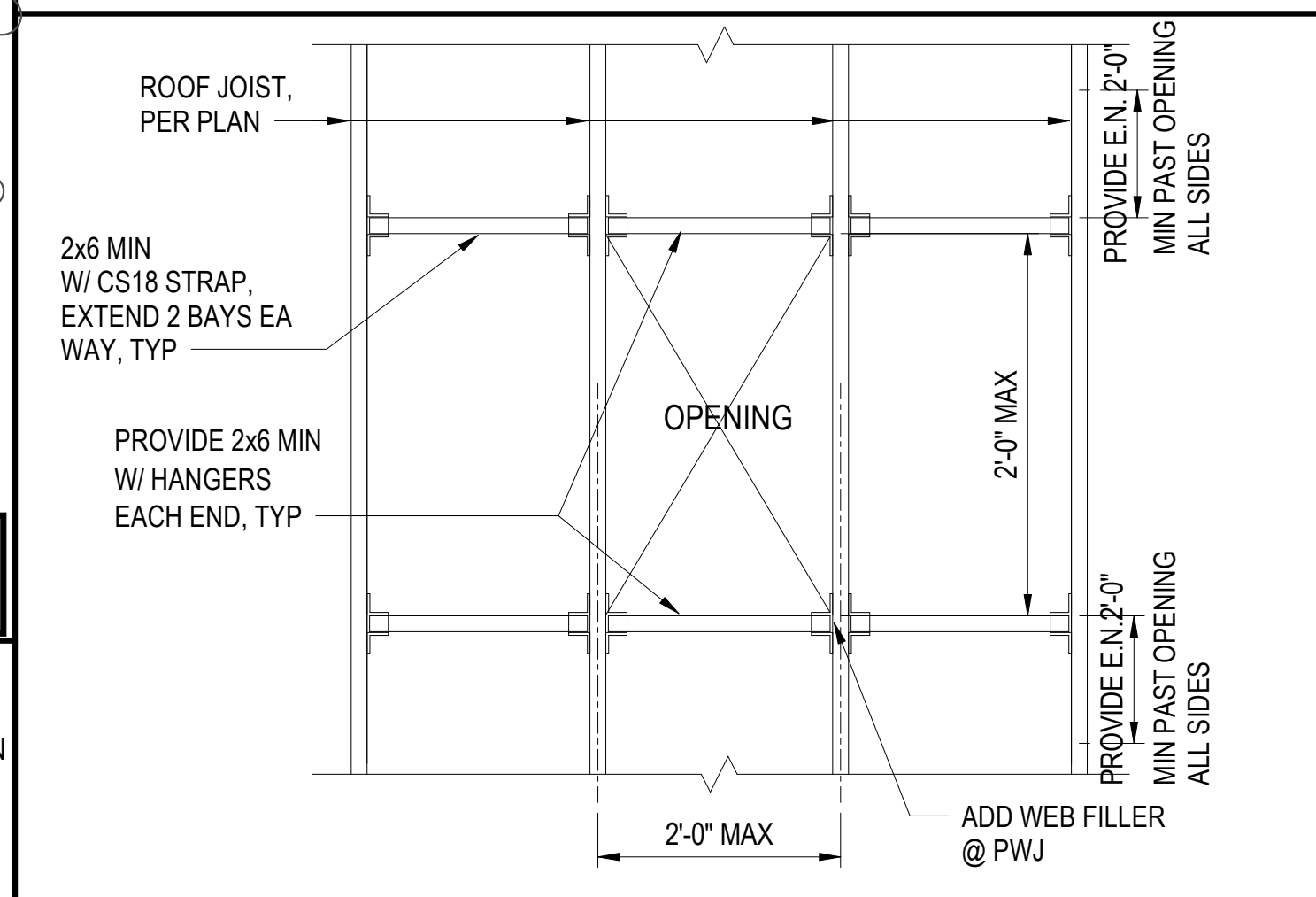
6



TYPICAL MECHANICAL UNIT ANCHORAGE DETAIL

SCALE: NTS

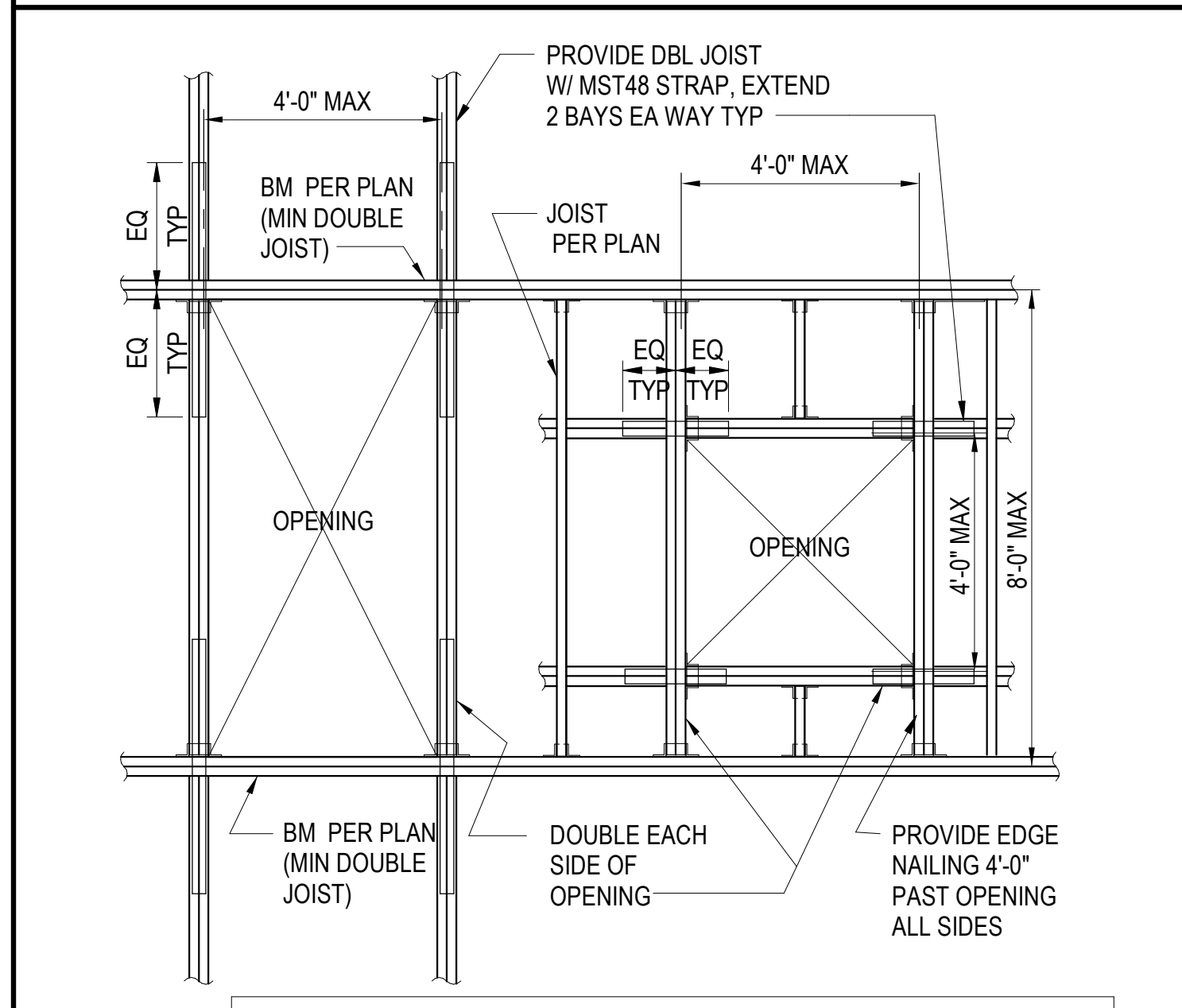
5



TYPICAL ROOF FRAMING AT OPENING BETWEEN JOIST

SCALE: NTS

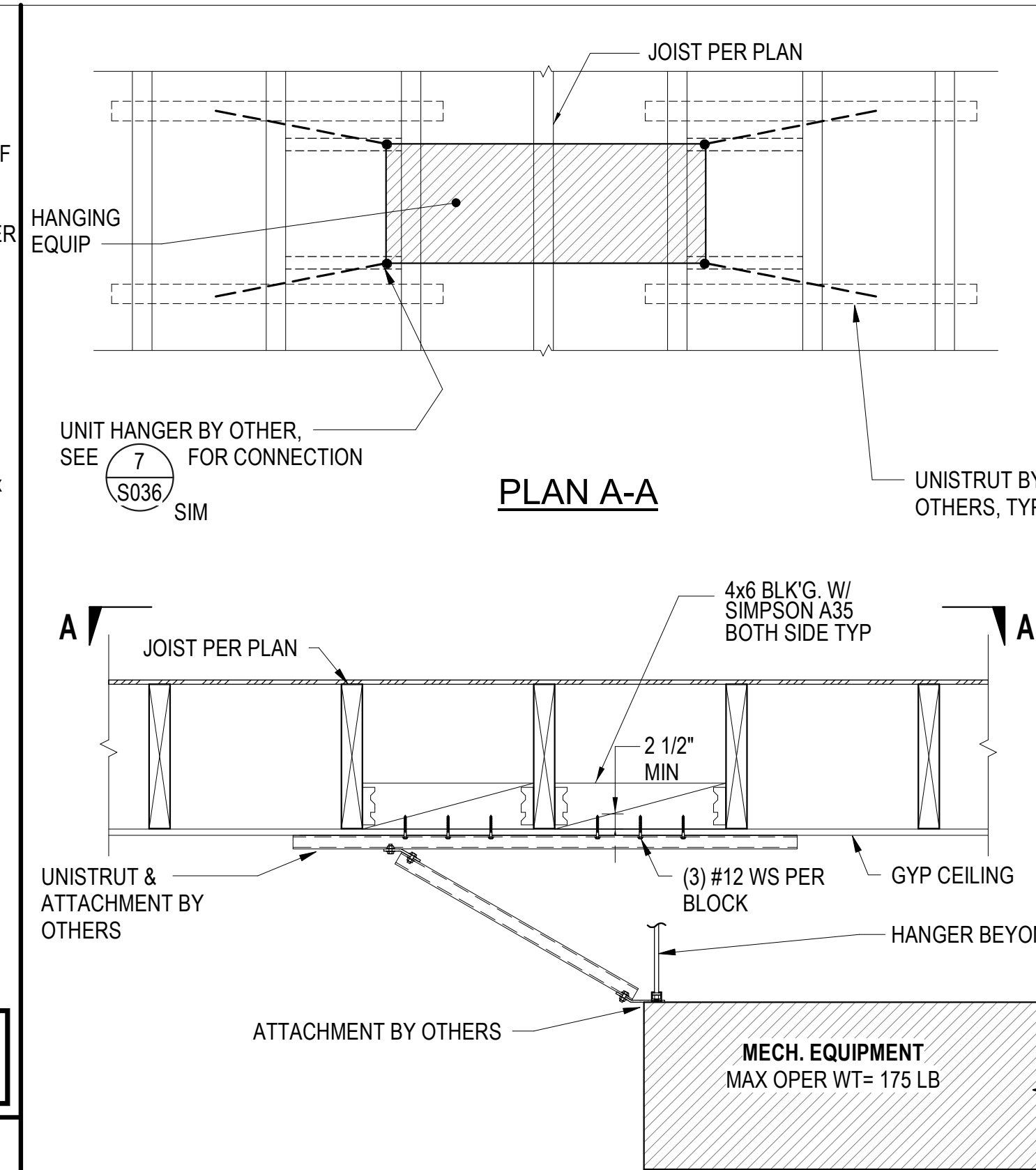
4



TYPICAL ROOF FRAMING OPENING DETAIL

SCALE: NTS

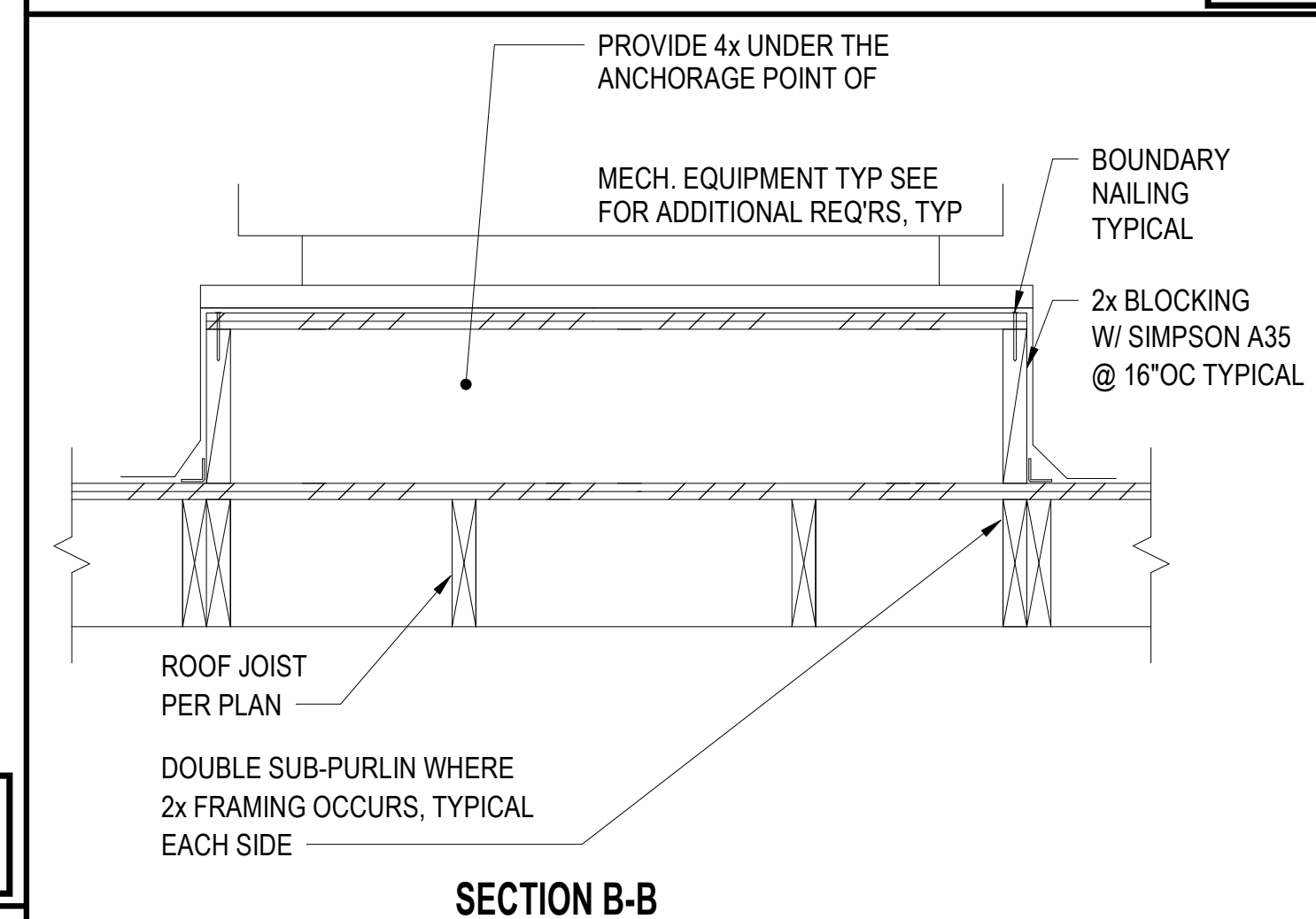
3



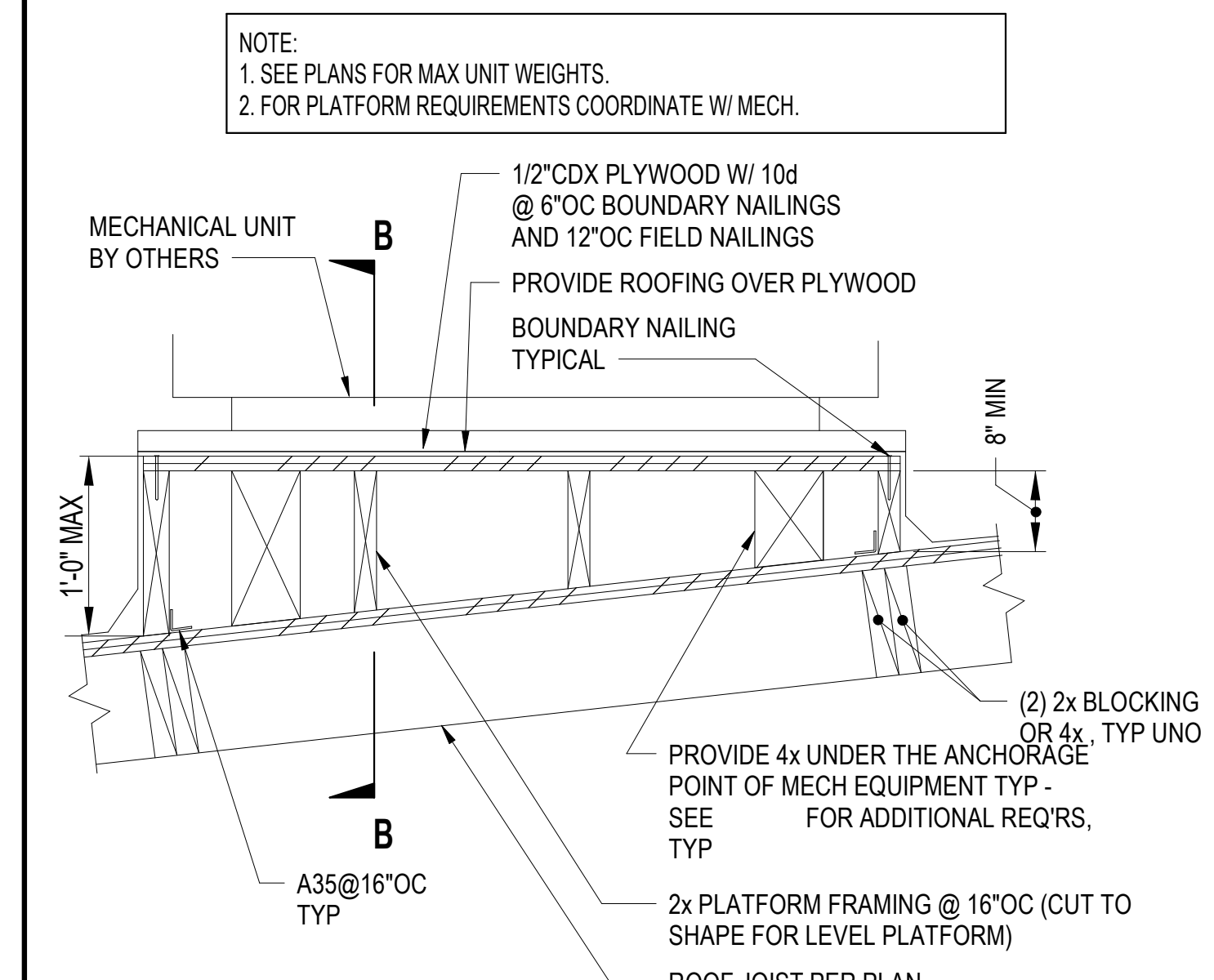
TYP HANGING MEP EQUIPMENT SUPPORT DETAIL AT 2x JOIST

SCALE: NTS

2



SECTION B-B



TYPICAL MECHANICAL UNIT PLATFORM DETAIL

SCALE: NTS

1

WILLIAM LOYD JONES
ARCHITECT

9415 culver boulevard
culver city, california
90230
(213) 315-2277
Project #25534

SO
saiful-bouquet
structural engineers

725 S. Figueroa St.,
37th floor
Los Angeles, CA 90017
www.saifulbouquet.com
Project #25534

TYPICAL WOOD DETAILS

FIRE STATION 46
MISSION VILLAGE
COUNTY OF LOS ANGELES FIRE DEPARTMENT
VALENCIA, CALIFORNIA

REGISTERED PROFESSIONAL ENGINEER
No. 83298
Exp. 12/31/25
STRUCTURAL
STATE OF CALIFORNIA

THE ABOVE DRAWINGS AND SPECIFICATIONS AND DESIGN AND ALL
ARRANGEMENTS REPRESENTED THEREBY ARE AND SHALL REMAIN THE
PROPERTY OF THE ARCHITECT, AND NO PART THEREOF SHALL BE COPIED,
REPRODUCED, OR IN ANY MANNER DISCLOSED TO OTHERS OR USED IN CONNECTION WITH ANY WORK OR PROJECT
OTHER THAN THE SPECIFIC PROJECT FOR WHICH THEY HAVE BEEN PREPARED, WITHOUT THE WRITTEN CONSENT OF THE ARCHITECT.
CONTRACTORS SHALL VERIFY AND BE RESPONSIBLE FOR ALL DIMENSIONS AND CONDITIONS ON THE JOB AND THIS OFFICE SHALL
NOT BE NOTIFIED OF ANY VARIATIONS FROM THE DIMENSIONS AND CONDITIONS
SHOWN IN THESE DRAWINGS. SHOP DETAILS MUST BE SUBMITTED TO THE
OFFICE FOR APPROVAL, BEFORE PROCEEDING WITH FABRICATION.
Copyright 2026

Date
Drawn
Checked
Scale
Job. No.

Issue Date
AS NOTED
Project Number

October 1, 2026

S036

APPENDUM# 3 - BID SET - APRIL 30, 2026

PLAN CHECK